



AUDALITY

To start enjoying your new S1 speaker:

1. Ensure that the speaker volume is not set above 50% for set-up purposes (You can turn it up/adjust later)
2. Turn on the power to the speaker. The blue pairing light should be blinking.

For use with computer:

1. Plug the USB transmitter into the computer's USB port. There is a chance that the system will automatically pair. If so, the USB light will go from blinking blue to solid blue and the system is paired.
2. If the USB light is blinking, then press the "pairing" button on the back of the speaker. The system should pair and both the speaker and USB transmitter will have solid blue lights.
Ensure that your computer volume is no higher than 50%. Again, you can turn it up later.
3. Check your "sound card device" to ensure you see "2-WiC 1 USB Stereo 1TX-4RX" and have it selected as your sound source.
4. Open a music application like Spotify (we recommend due to encoding quality), iTunes, etc.
5. Find a music file and start it playing. You should hear audio coming through the speaker.
6. Adjust your speaker volume knob up to around 75%.
7. From this point forward, control volume with the computer volume.

For use with the phone:

1. Turn the volume of your phone to below 30%.
2. Use the appropriate adapter to connect the USB Transmitter to your phone. We have included an Apple adapter, and understand that Android providers provide a USB adapter to adapt to USB-A.
3. The USB transmitter will likely blink for a couple of seconds and pair with your speaker automatically. If it doesn't, simply press the "pairing" button on the Speaker to pair the system.
4. Open your favorite music app and play.
5. Use your phone volume and the speaker volume to adjust volume accordingly.

Audio Channel Selection:

Your wireless speaker can be set to Left, Right, or Both. This allows you to choose to use a single speaker or connect multiple speakers in stereo.

Tips & Hints:

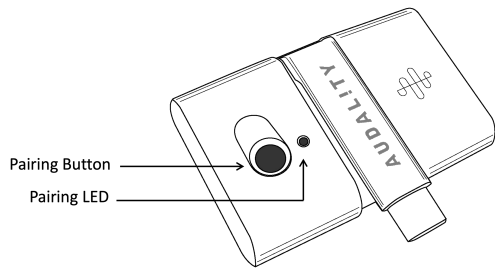
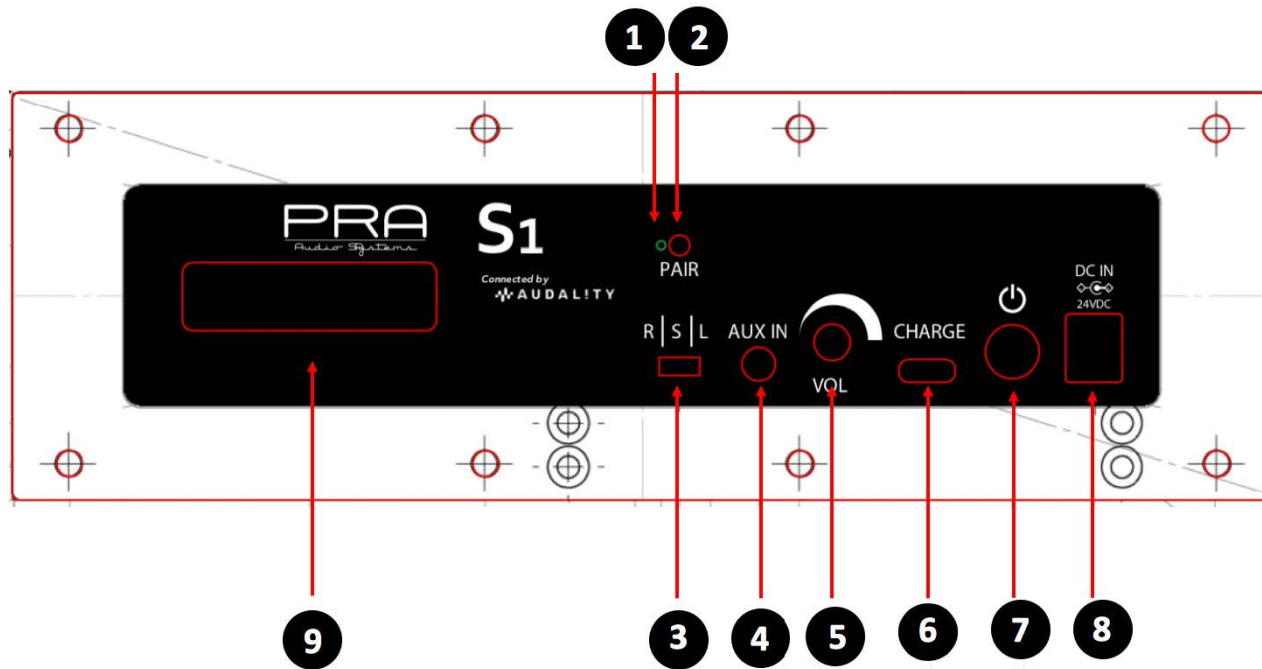
- Range: The range varies depending on the environmental conditions like weather, terrain and buildings. We have gotten as much as 500 feet range.
- Placement: Our technology automatically finds the most interference-free channel, but we recommend setting up your S3 speaker off of the ground and at least 1m away from your Wi-Fi router for optimal listening and connection.
- The battery gauge will give a false reading when your speaker is charging. Unplug from charger to see accurate reading.

What's Included:

- (1) S1 Wireless Speaker- (2) 4-inch speakers
- (1) Wireless USB transmitter
- (1) 24v Power Charging Chord

WARNING:

- No user serviceable parts inside.
- Each Unit is powered by Lithium-Ion Rechargeable Battery.
- Do not open, crush, modify, disassemble, heat above 140°F (60°C), or incinerate. Improper handling could cause batteries to explode or release toxic materials, creating risk of fire or burns.



Multifunction LED

Charging (orange=charging, green=charged)

Pairing (blinking= not paired, solid=paired)

Battery Low (flashing purple)

- | | |
|----------------------------|--------------------------|
| 1. Multifunction LED | 6. USB-C Charging Port |
| 2. Pairing button | 7. Power |
| 3. Audio Channel Selection | 8. DC Wall Charger Port |
| 4. Audio Input | 9. Battery Level Display |
| 5. Volume Control | |